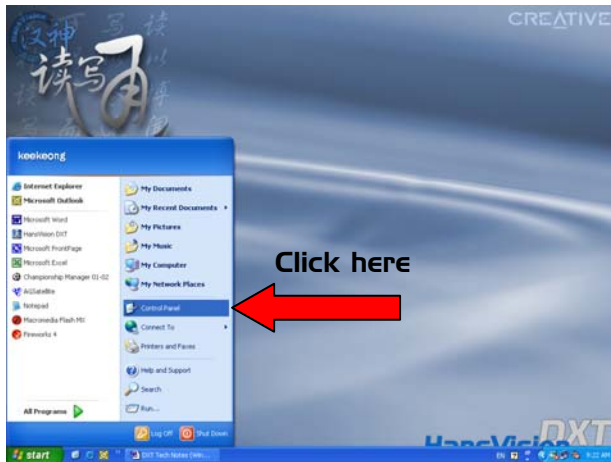


IMPORTANT NOTE:

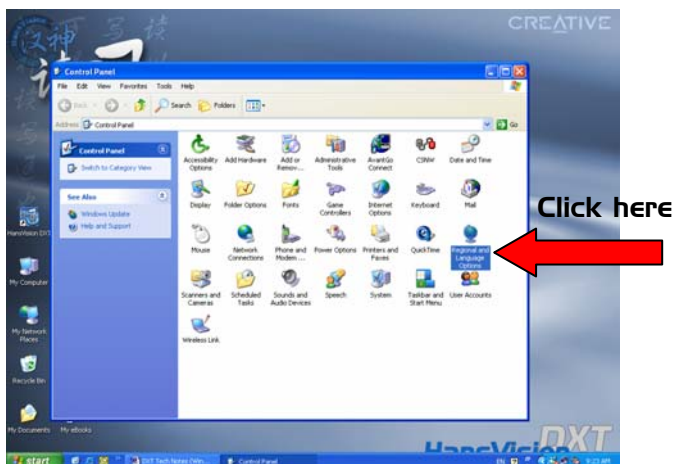
To use HansVision PJS input methods in Windows XP, please ensure that the "language bar" is shown on your desktop for you to choose between different (Chinese & English) input methods.

To ensure the "language bar" is shown on your desktop:

1. Click on **Start** button, and open **Control Panel**.

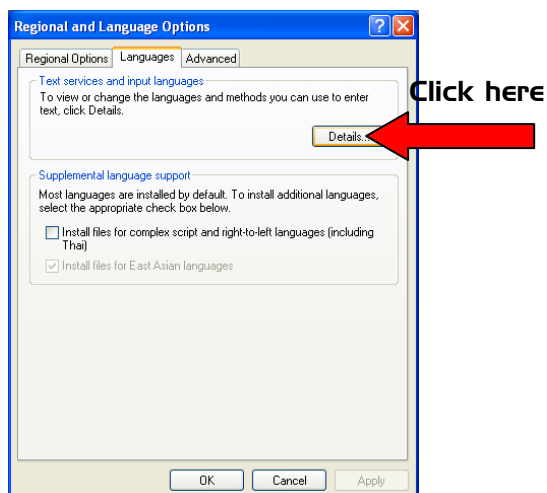


2. Go to **Regional and Language Options** and select **Languages**.

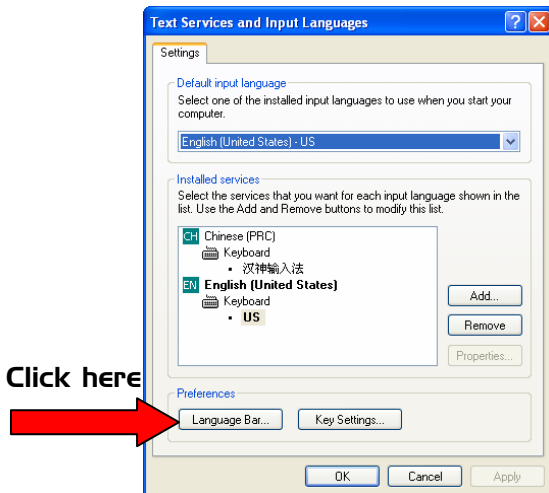
**Note1:**

The control panel is displayed in *Classic View*

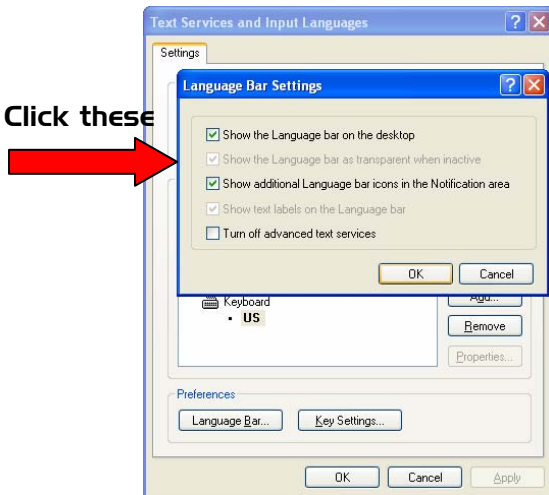
3. Under **Text services and input languages**, click on **Details** as shown :



- Under **Preferences**, click on **Language Bar**.



- From the **Language Bar Settings** dialog box, ensure that **Show the Language bar on the desktop** and **Show additional bar icons in the Notification area** as shown.



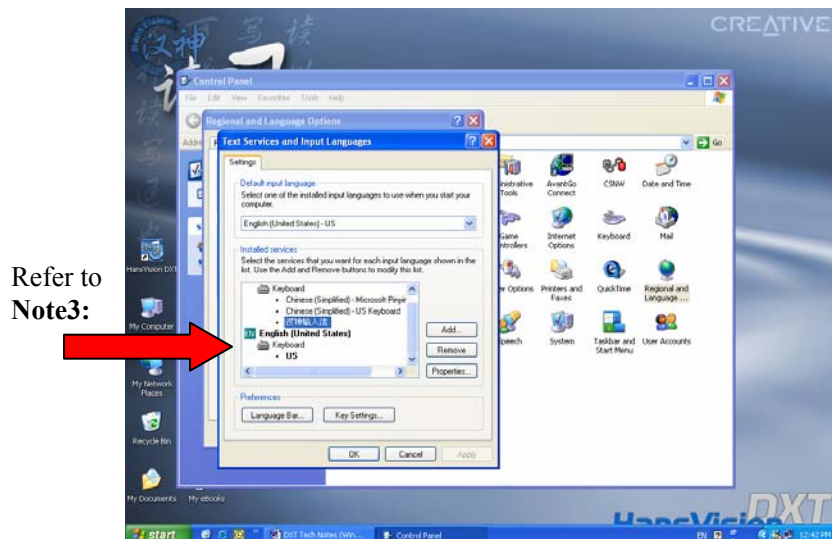
Note2:
Your system may already have some of the options pre-selected.

Just ensure that the 1st and 3rd option are selected if they were previously not chosen.

- Press **“OK”** to confirm.

REMARK 1:

If you have already installed **HansWare and Input Methods**, you will find **“汉神输入法”** under **Installed services**, as shown below:



Refer to **Note3:**

Note3:
You will see **“汉神输入法”** only if you have already installed **HansWare & Input Methods**.

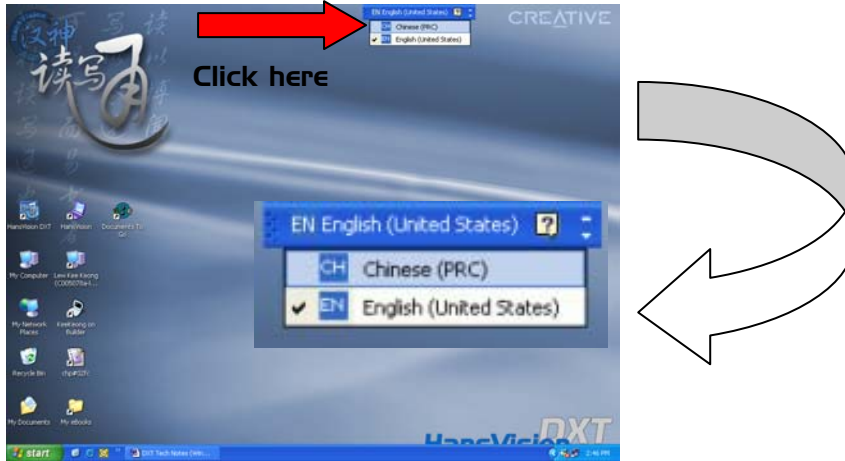
If you have not installed **HansWare**, please insert your **HansVision DXT CD-ROM** and choose the option **“Setup HansWare & Input Methods”**.

To select PJS input method from the Language Bar:

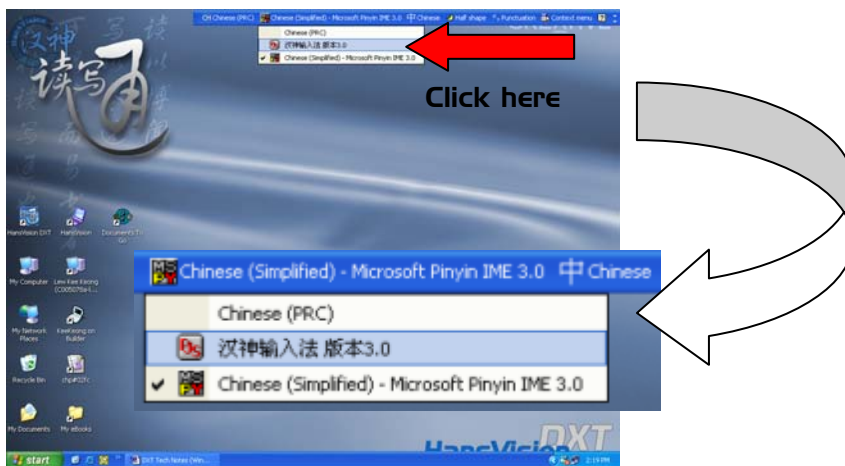
IMPORTANT NOTE:

Please ensure that you start the program (which you wish to input Chinese into e.g. Microsoft Office, HansMaster or Internet Explorer etc.) **FIRST** before selecting PJS input method from the Language bar.

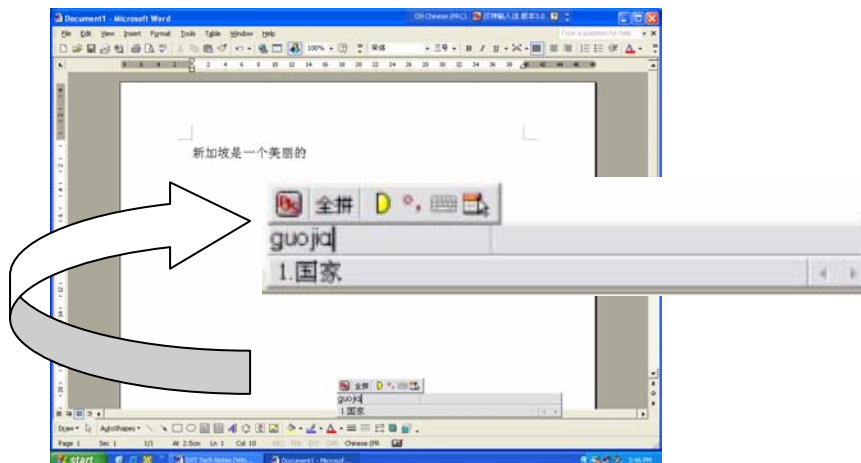
1. From the **Language Bar**, click on **EN** for English, and select **CH Chinese (PRC)** from the drop-down menu.



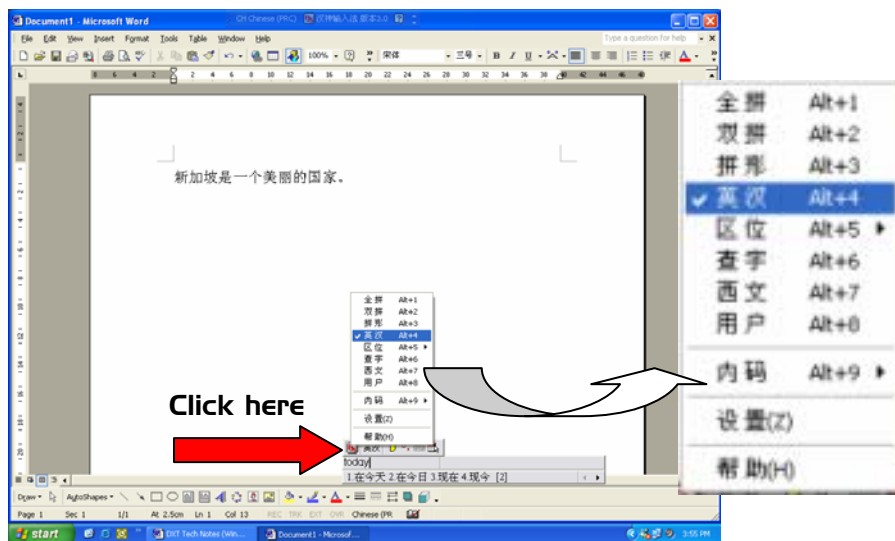
2. From the resulting CH Language Bar, click on "Microsoft Pinyin IME 3.0" or "Chinese (PRC) keyboard" and select "汉神输入法版本 3.0".



3. The **PJS input bar** will be displayed as shown:
You can now input Chinese using **Hanyu Pinyin** (default).



4. To change between various input methods, click on the **PJS** icon on the **input bar** as shown:



5. To stop Chinese input and revert back to English, simply click on **CH Chinese (PRC)** icon and select **EN English (United States)** from the drop-down menu, as shown below:



REMARK 2:

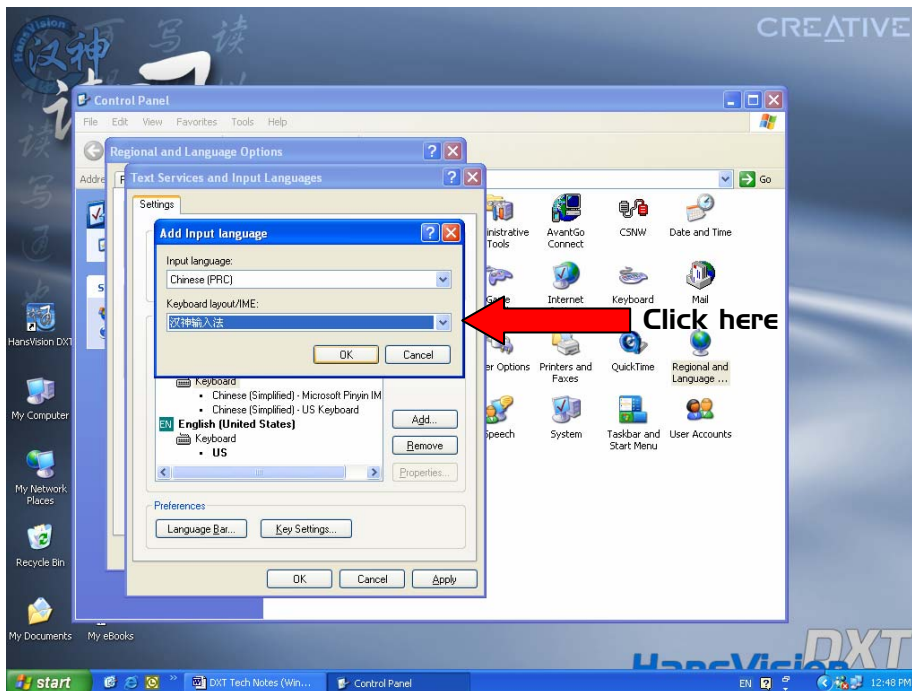
Please take note that the (current) input method you have selected is only applicable to the current program window. To input Chinese into another application program, you need to first open the program in a new window and re-select “汉神输入法版本 3.0” from the Language Bar as described from step 1 to 3.

*** To input Chinese using PJS if you have more than one user accounts (i.e. multiple users) in Windows XP.

NOTE:

If you do not find “汉神输入法” under **Installed services** (refer to page 2, Step 4), you may manually add the input method by following the instruction below (**This is also applicable for Windows XP with more than one user accounts. Please ensure that you are log on to the user account which requires Chinese input using “汉神输入法”**):

1. Under **Installed services**, click on **Add**.
 - ✓ Select Input language as **Chinese (PRC)**;
 - ✓ Select Keyboard layout/IME as 汉神输入法.



2. Click **OK** to close **Add input language**.
汉神输入法 will now appear under **Chinese (PRC)** in **Installed services**.
3. Click **OK** to close **Text Services and Input Languages**.
4. Click **OK** to close **Regional and Language Options**.

For more tips & techniques on Chinese input using HansVision and PJS, please refer to: [HansVision DXT online manual](#)