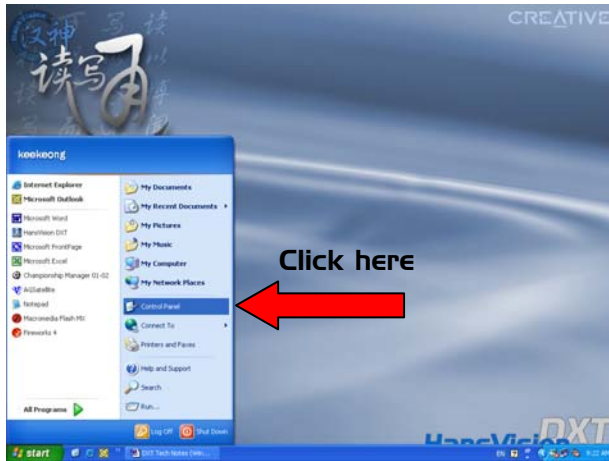


IMPORTANT NOTE:

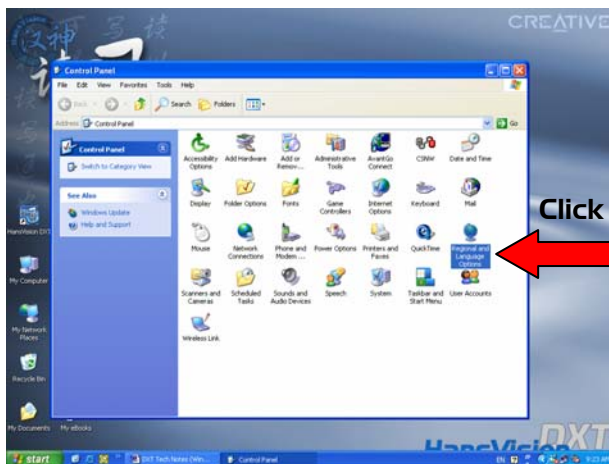
Please ensure that you have already installed the language support for Windows XP **FIRST** before installing HansVision DXT and HansWare & Input Methods.

To check whether you have installed Chinese language support correctly:

1. Click on **Start** button, and select **Control Panel**.

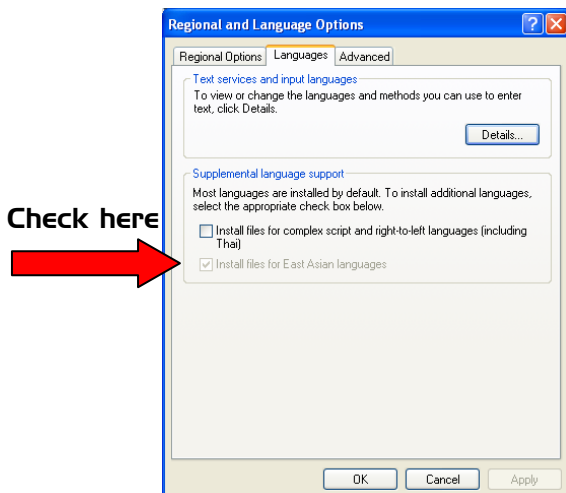


2. Double-click on **Regional and Language Options**.



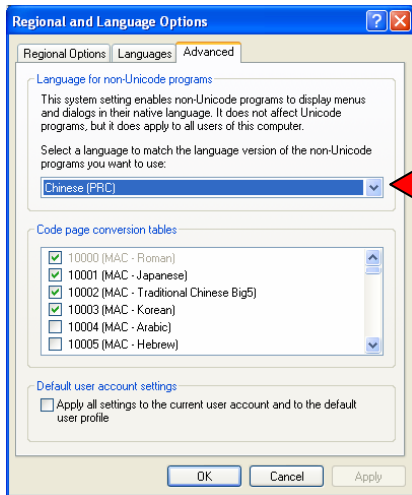
Note1:
The control panel is displayed in *Classic View*

3. From the Regional and Language Options dialog box, click on the **Languages** tab. Under **Supplemental language support**, ensure that the option **Install files for East Asian Languages** is selected as shown:



Note2:
If your system already has this option pre-selected, it will be displayed in "grey" as shown.

- Next, click on the **Advanced** tab.
- Under **Language for non-Unicode programs**, click the down arrow from the drop down menu and choose **Chinese (PRC)**, as shown below.



Click the down arrow and select Chinese (PRC) from the list

Note3:

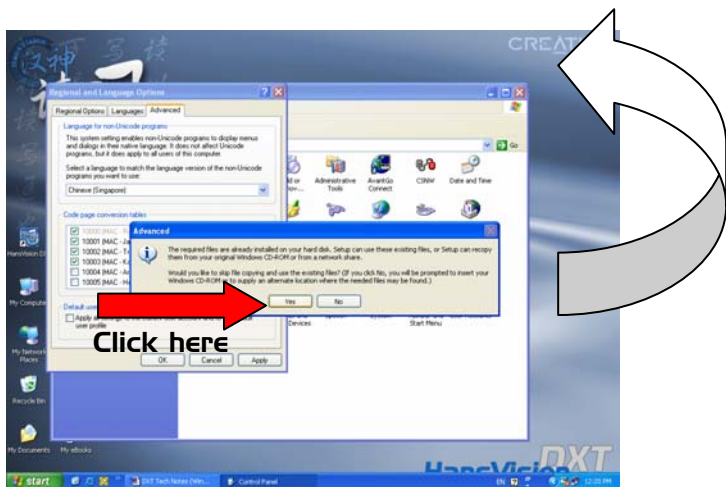
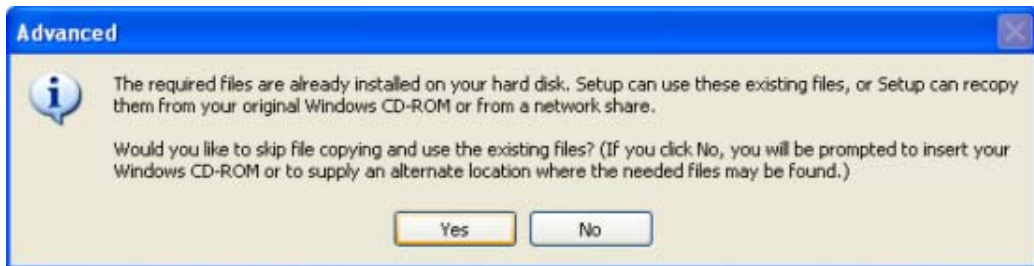
If you cannot find **Chinese (PRC)** from the drop-down list, please ensure that you have selected the option “install files for East Asian languages” as shown in step 3.

- Press **OK** to confirm.

REMARK 1:

The system may prompt you for your “Windows XP” Installation CD to complete the setup process IF YOU HAVE NOT previously selected the option “Install files for East Asian languages”.

- If you have already selected the option **Install files for East Asian languages** as described in step 3, you will be prompted with the following message:



Click here

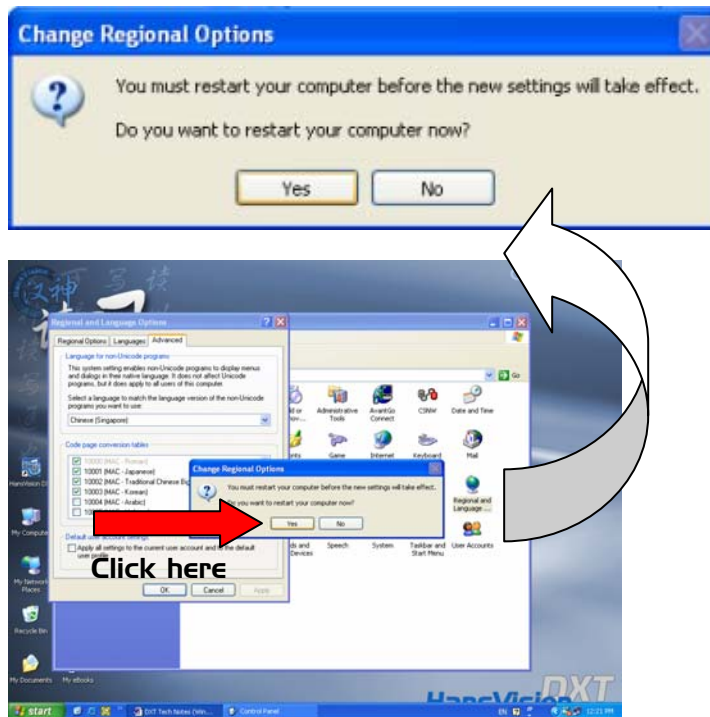
Note4:

It’s recommended that you click **Yes** when prompted.

Clicking on **No** will attempt to recopy the files and the system may prompt you for your Original Windows CD-ROM.

Click **Yes**.

8. The system will then prompt you with the following message:



Click Yes

REMARK 2:

Your system will now restart and is now able to support Simplified Chinese interface.

After your computer has restarted, you can insert your “HansVision DXT” Installation CD into your CD-ROM drive. You are advised to follow the on-screen instructions and ACCEPT ALL DEFAULT SETTINGS.

For more information on how to input Chinese into Windows XP, please refer to: [WinXP_Chinese input using PJS.pdf](#)

Note5:

You must restart your computer for the settings to take effect before installing HansVision DXT and HansWare