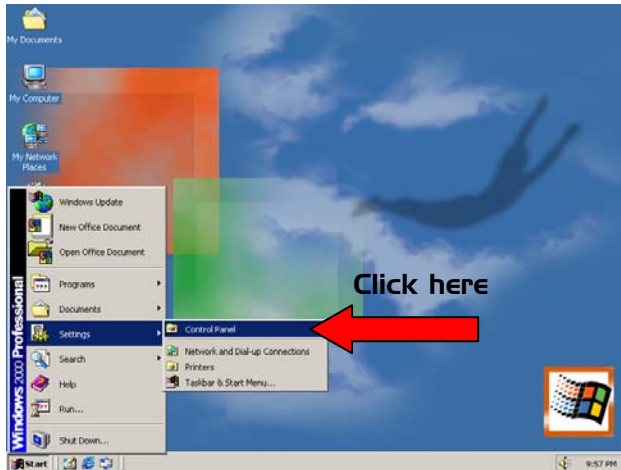


IMPORTANT NOTE:

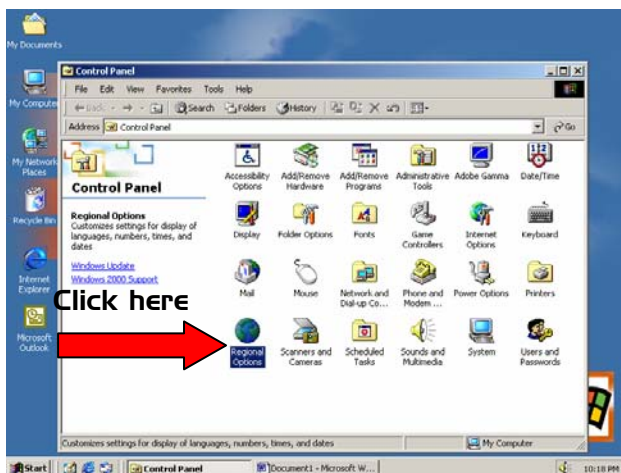
Please ensure that you have already installed the language support for Windows 2000 **FIRST** before installing HansVision DXT and HansWare & Input Methods.

To check whether you have installed Microsoft language support correctly:

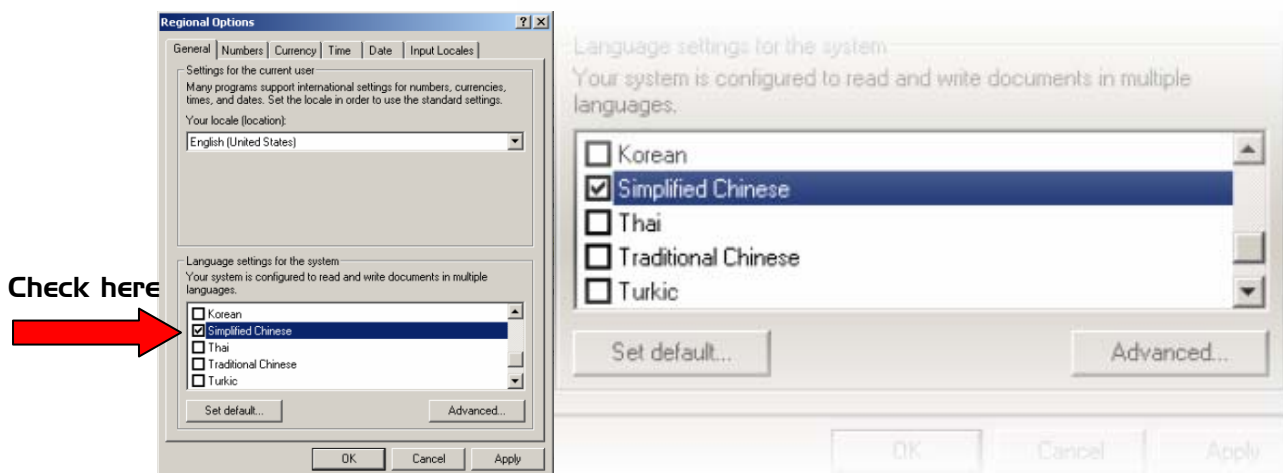
1. Click on **Start** button, select **Settings** and open **Control Panel**.



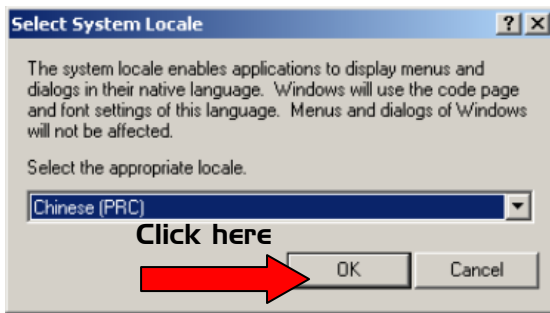
2. Double-click on **Regional Options**.



3. From the **Regional Options** dialog box, click on the **General** tab. Under **Language settings for the system**, scroll down the list and select **Simplified Chinese** by clicking the option. The option will be highlighted in blue as shown:



4. Once the option **Simplified Chinese** is selected, click on **Set default....** A dialog box will be displayed as shown:

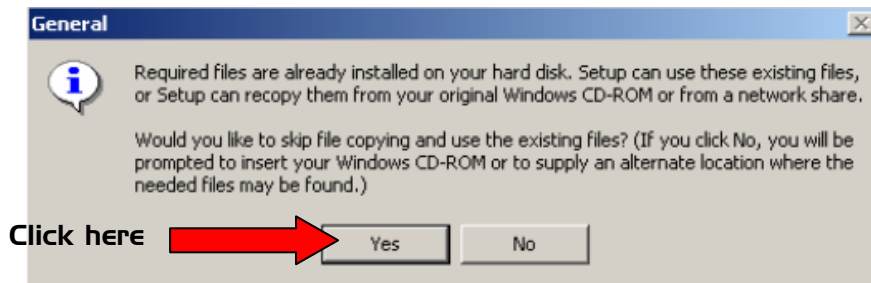


Click the down arrow from the drop down menu and choose **Chinese (PRC)**.

Click **OK** to close the dialog box.

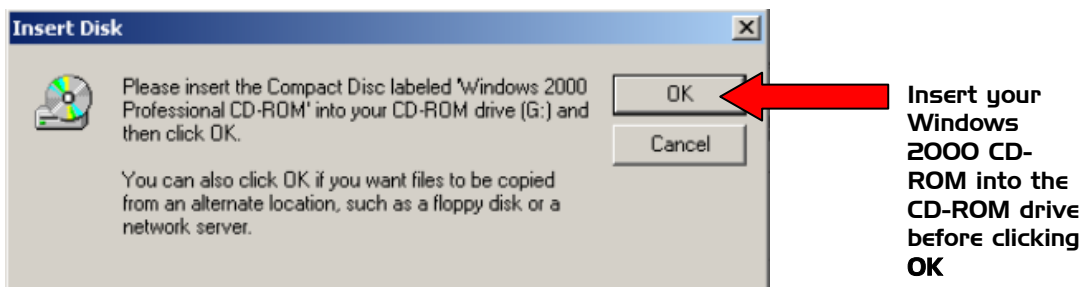
5. Press **OK** to confirm, you may be prompted with **EITHER** of the following message:

a) In most cases, your system is already pre-installed with the required files, hence you'll get the following message.



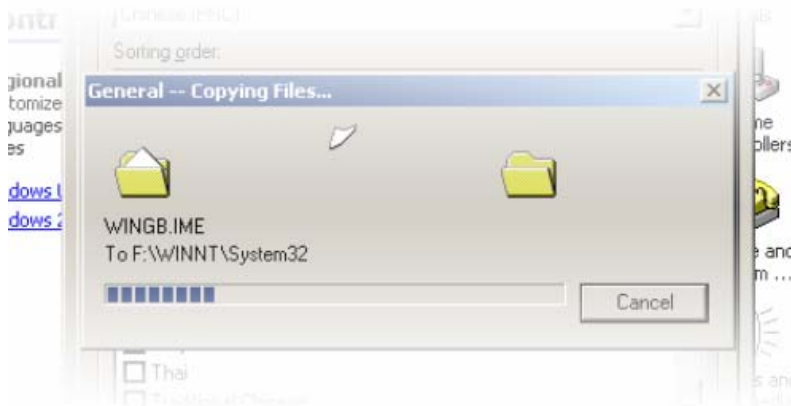
Click **Yes** to skip files copying, and proceed directly to step 7, **OR**

b) in some cases, your system was not pre-installed with the required files, hence you'll get the following message.

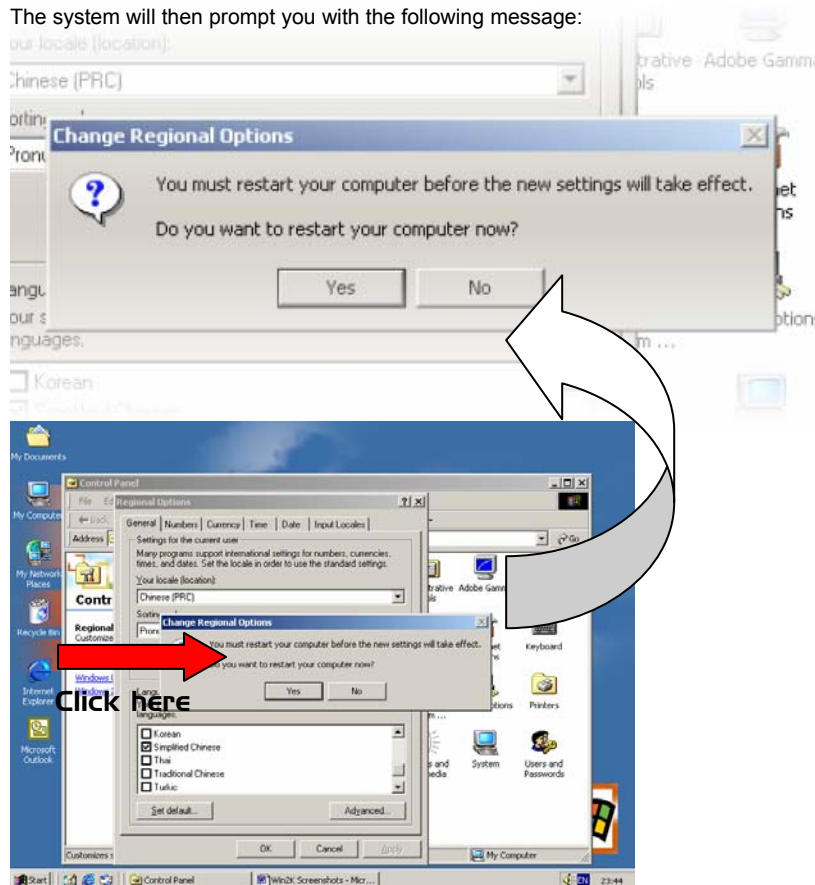


After inserting your "Windows 2000" Installation CD into your CD-ROM drive, press **OK** to continue.

6. Setup will now proceed to copy the files needed for installation of Simplified Chinese language support, as shown:



7. The system will then prompt you with the following message:



Click **Yes** to restart your computer.

REMARK 1:

Your system will now restart and is now able to support Simplified Chinese interface.

After your computer has restarted, you can insert your “HansVision DXT” Installation CD into your CD-ROM drive. You are advised to follow the on-screen instructions and ACCEPT ALL DEFAULT SETTINGS.

For more information on how to input Chinese into Windows 2000, please refer to: [Win2000_Chinese input using PJS.pdf](#)

Note1:

You must restart your computer for the settings to take effect before installing HansVision DXT and HansWare