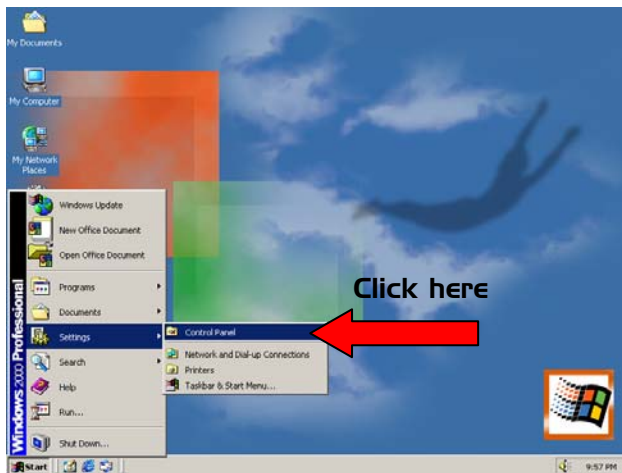


IMPORTANT NOTE 1:

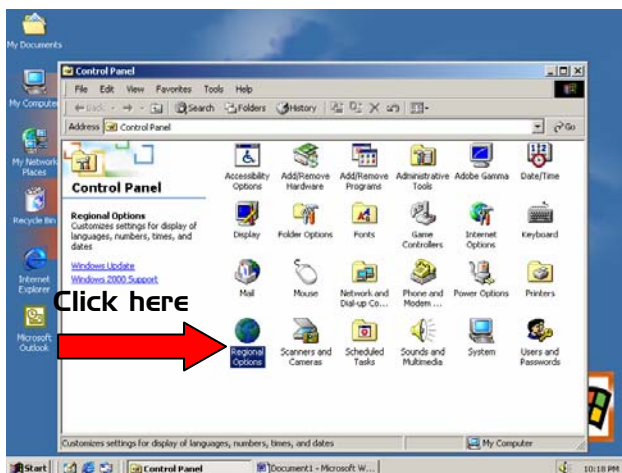
To use HansVision PJS input methods in Windows 2000, please ensure that the “input locale indicator” is shown on your desktop for you to choose between different (Chinese & English) input methods.

To ensure the “input locale indicator” is shown on your desktop:

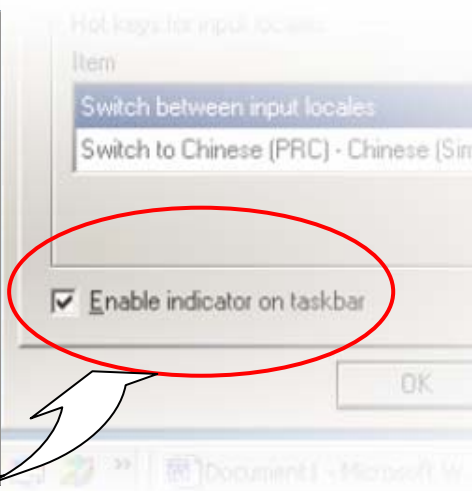
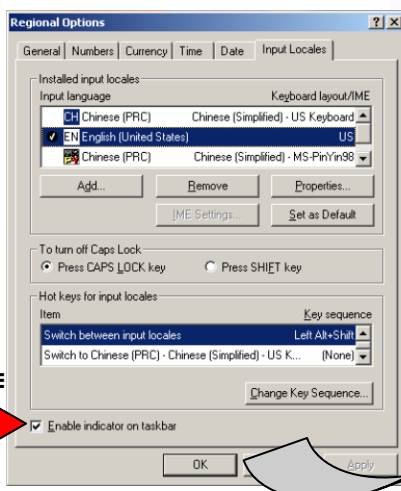
1. Click on **Start** button, select **Settings** and open **Control Panel**.



2. Click on **Regional Options**.



3. From the **Regional Options** dialog box, click on the **Input Locales** tab. Ensure that the option **Enable indicator on taskbar** is checked, and click **OK**. The “Input Locale indicator” **EN** will now be visible at your Windows taskbar, as shown in page 2.



Note1:

You will see “汉神输入法” under **Installed input locales** only if you have already installed HansWare & Input Methods.

If you have not installed HansWare, please insert your HansVision DXT CD-ROM and choose the option “Setup HansWare & Input Methods”.

To select PJS input method from the Input Locale indicator:

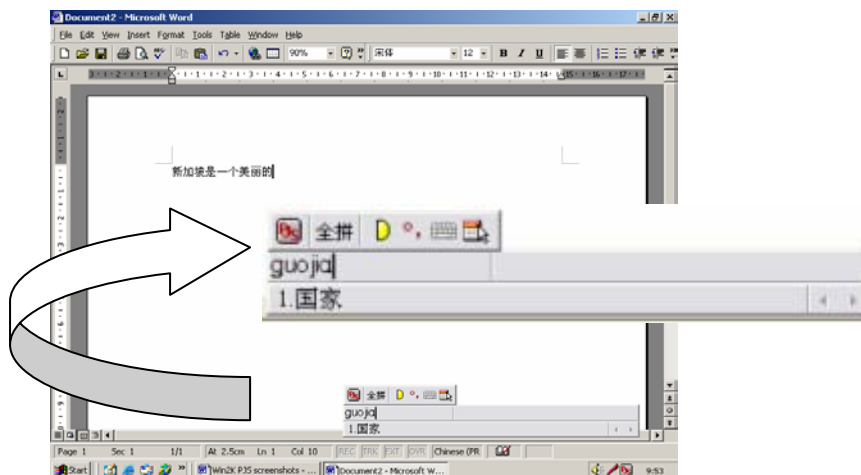
IMPORTANT NOTE 2:

Please ensure that you start the program (which you wish to input Chinese into e.g. Microsoft Office, HansMaster or Internet Explorer etc.) **FIRST** before selecting PJS input method.

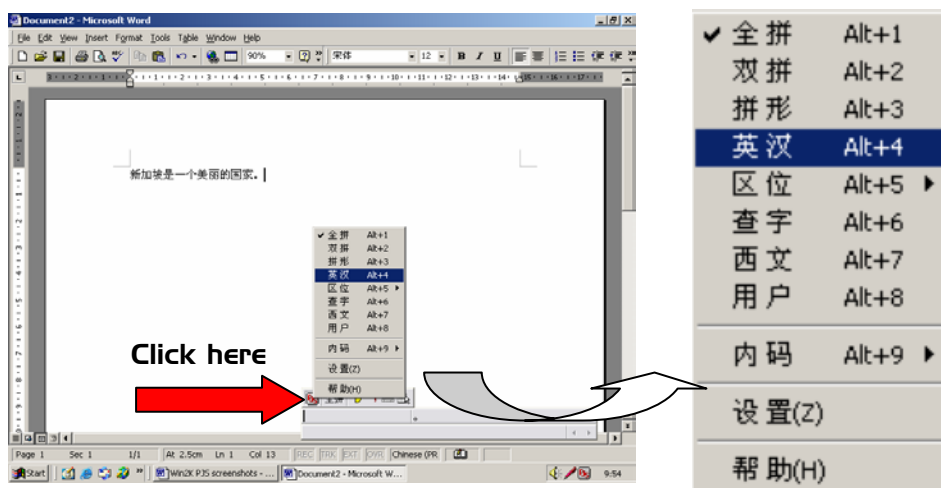
1. From the Task Bar where the Input Locale indicator is located, click on **EN** for English, and select “汉神输入法版本 3.0”.



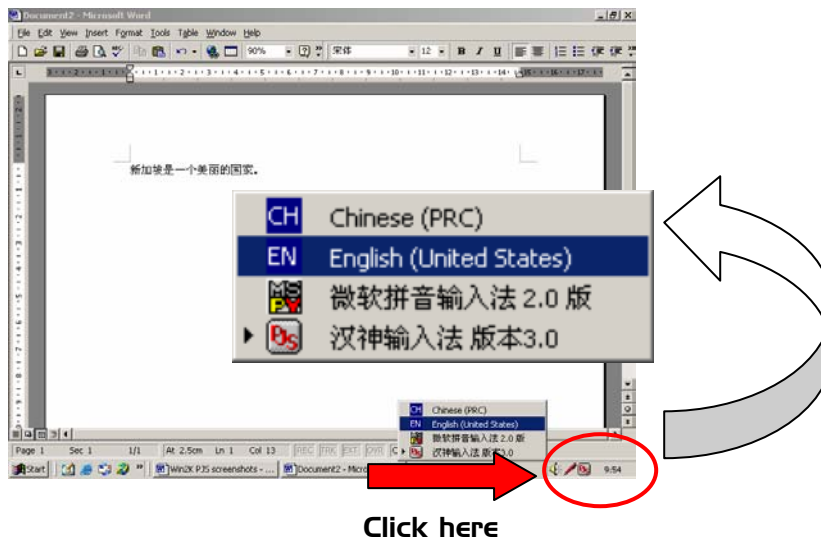
2. The **PJS input bar** will be displayed as shown; you can now input Chinese using **Hanyu Pinyin** (default).



3. To change between various input methods, click on the **PJS icon** on the **input bar** as shown:



4. To stop Chinese input and revert back to English, simply click on the Task Bar where the PJS input method icon is located and select **EN English (United States)** from the menu, as shown below:

**REMARK 1:**

Please take note that the (current) input method you have selected is only applicable to the current program window. To input Chinese into another application program, you need to first open the program in a new window and re-select “汉神输入法 版本 3.0” from the Input Locale indicator as described from step 1 and 2.

For more tips & techniques on Chinese input using HansVision and PJS, please refer to: [HansVision DXT online manual](#)